



47 City Central - 181838 City Central, 27 Wellington Street, Leeds, West Yorkshire, L
£1,325 PCM

SW
RESIDENTIAL

- Two Large Double Bedrooms
- Spacious Open Plan Living Room and Kitchen
- Furnished
- Council Tax Band E
- Available Long Term
- Grade II Listed Building
- Two Bathrooms
- Available Now
- Water Rates Included in Rent

THE PROPERTY

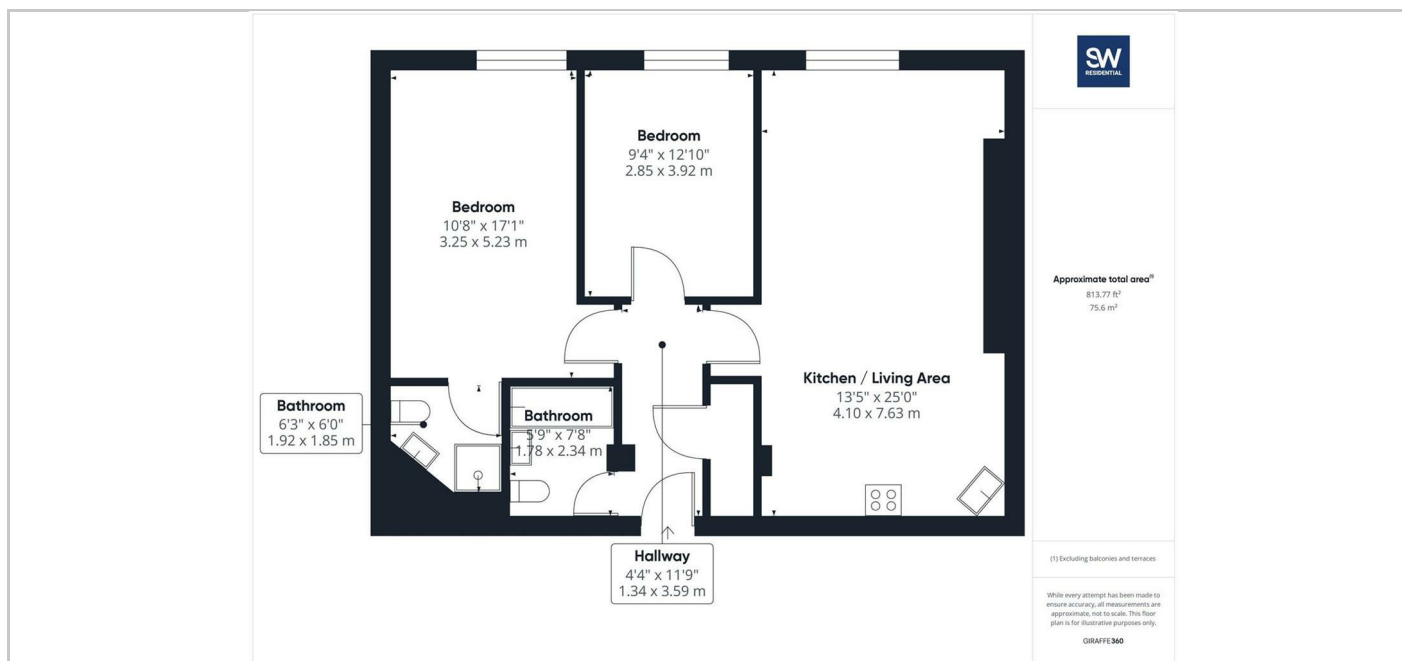
Welcome to this charming apartment located in the heart of City Central on Wellington Street in Leeds. This delightful property boasts a spacious reception room, perfect for entertaining guests or simply relaxing after a long day. With two cosy bedrooms and two bathrooms, there is ample space for you and your loved ones to enjoy.

Situated in a prime location, this apartment offers convenience and accessibility to all that the vibrant city of Leeds has to offer. Whether you're looking to explore the bustling City centre or enjoy a peaceful stroll along the nearby parks, this property provides the best of both worlds.

In addition water rates included in the rent, you can enjoy peace of mind knowing that this essential utility is taken care of.

Don't miss out on the opportunity to make this apartment your new home. Contact us today to arrange a viewing and experience the comfort and convenience that this property has to offer.

SITUATION



Directions

6th Floor Central Square, 29 Wellington Street, West Yorkshire, LS1 4DL
Tel: 0113 221 6000 Email: residential@sw.co.uk